

## BLIDGS4 Single sided safety barrier

### PERFORMANCE PARAMETERS

Safety barrier suitable for assembling on road borders.

It is made of a single sided safety barrier of double wave and a post C100x50 mm every 4,0 m.

### FEATURES

Very light system.

Minimum number of components.

2-waves beam.

### ADVANTAGES

Its low weight and simplicity make it easy to transport, handle, assemble and maintain, resulting in a.

Direct transition with other safety barriers.

### MATERIALS

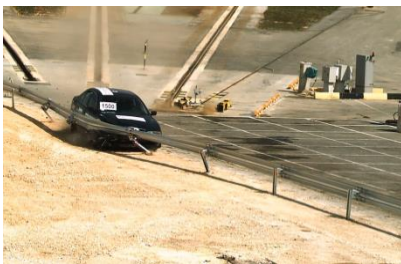
Steel S235JR S275JR as per EN 10025.

### DURABILITY

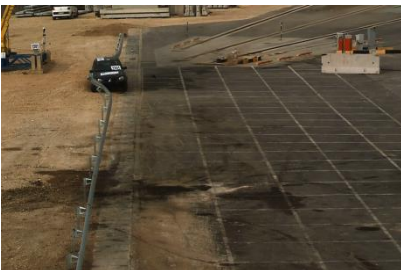
Hot Dip Galvanization as per EN ISO 1461.

Containment level	N2
Severity	A
Working width	W5
Dynamic deflection	1,5

## CRASH TESTS (AS PER EN 1317)



**Test:** TB32 (car 1.500 Kg., 110 Km/h, 20°)



**Test:** TB11 (car 900 Kg., 100 Km/h, 20°)